
END USER WARRANTY

EGO SYSTEMS, INC. warrants the return policy to its original purchaser as follows: All EGO SYSTEMS INC.'s products, under normal use, will be free from fault as long as the purchaser owns this product for a period of twelve (12) months from the date of purchase.

EGO SYSTEMS INC. will, at its sole option, repair or replace a product, which is found to be defective. This warranty shall be invalid if, in the sole opinion of EGO SYSTEMS INC., a product failure is the result of misuse, abuse, modification, or misapplication. Except as expressly provided above, EGO SYSTEMS INC. products are provided, 'as is' without any kind of warranty. No claim is made for merchantability or fitness for any purpose. In no event will EGO SYSTEMS INC. be liable for any direct, indirect, consequential, or incidental damages arising out of use of the product.

The purchaser must contact EGO SYSTEMS INC. or its regional representative to receive prior approval before returning a faulty unit.

To obtain warranty service, the buyer or his authorized dealer must send an email to techsupport@audiotrak.net before returning the product. EGO SYSTEMS INC. will then issue an authorization number.

All such returns must be shipped to EGO SYSTEMS INC. headquarters in Seoul, Korea or the U.S, packaged in the original or equivalent protective packaging material (rack, PCI card, power cables, connection cables), with freight prepaid and adequate insurance. Any shipments without freight prepaid will not be accepted. If the returned product is deemed to be defective, the repaired or replacement product will be returned at no extra charge via the carrier chosen by EGO SYSTEMS INC.

Trademarks

AUDIOTRAK and OPTOPlay are trademarks of EGO SYSTEMS Inc. Windows is a trademark of Microsoft Corporation. Other product and brand names are trademarks or registered trademarks of their respective companies.

Radio Frequency Interference and COMPATIBILITY

NOTE: This equipment has been tested and found to comply with the limits for EN55022 Class A:1998+A1:2001, EN55024:1998 of CE Test Specifications. This equipment generates, uses, and can radiate radio frequency energy. If not installed and used in accordance with the instruction, it may cause interference to radio communications. This device also complies with Part 15 of class A of the FCC Rules. Operation is subject to the following two conditions: This device may not cause harmful interference, and must accept any interference received, including interference that may cause undesired operation.

Correspondence

For technical support inquiries, contact your nearest dealer or EGO SYSTEMS directly at:

Ego Systems Inc.
3003N. First St., Suite 303,
San Jose, CA 95134, USA
Website: www.audiotrak.net
E-mail: sales@audiotrak.net
Technical Support (English only)
techsupport@audiotrak.net

All features and specifications subject to change without notice.

CONTENTS

| | |
|----------------------------------|----|
| Overview | 1 |
| Installation..... | 3 |
| Minimum System Requirements..... | 3 |
| Hardware Installation | 3 |
| Software Installation | 3 |
| Configuring WinDVD4..... | 9 |
| Specifications | 11 |

OVERVIEW

OPTOPlay is the unique, yet simplistic USB device for producing high-fidelity analog and digital audio output. Simply plug OPTOPlay into your PC's USB port and instantly listen to 24-bit 96kHz professional quality audio.

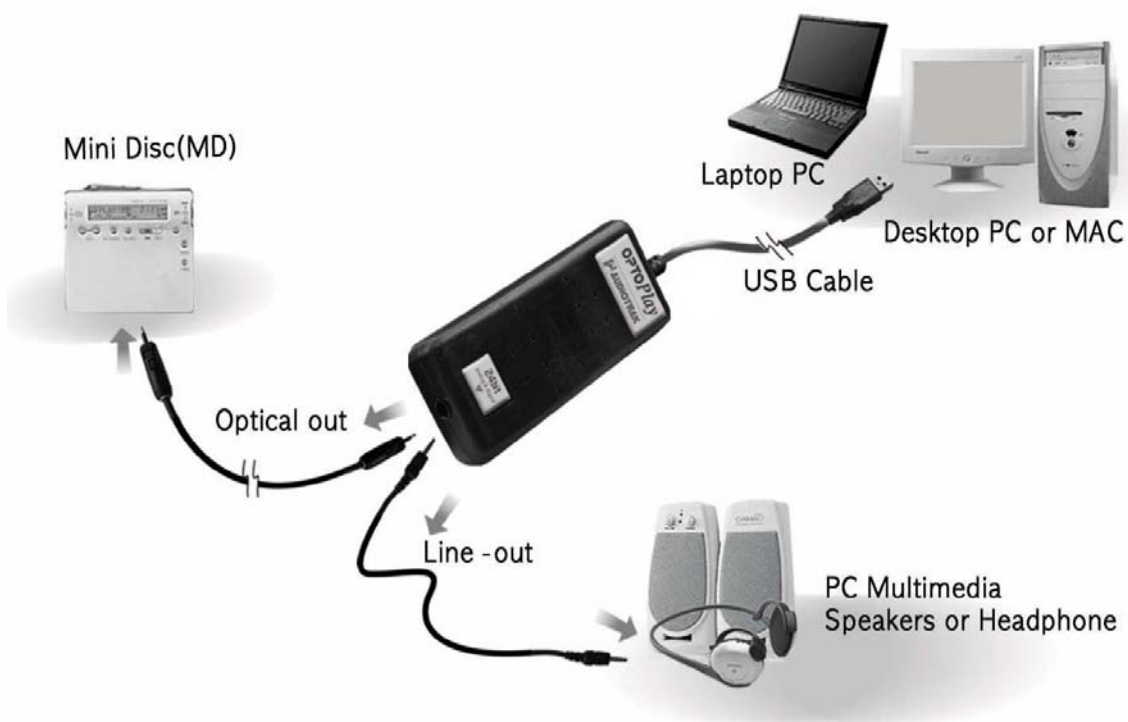
OPTOPlay delivers the stunning sounds of Dolby Headphone Technology, a unique signal-processing system that enables your stereo headphones to portray the sound of a five-speaker, surround-sound playback system.

* With Dolby Headphone Technology, sounds that were designed to come from all around you are actually heard that way and not out of each side of the headphone.

* A 5.1 surround sound digital output can be achieved by using OPTOPlay's Optical connector to pass thru all popular surround sound formats like Dolby digital 5.1.

(* These functions will work only with the included WinDVD 4.0 software)

OPTOPlay's compact design and high-fidelity headphone amp delivers the ultimate portable audio solution with professional 24-bit 96kHz surround sound.



Connecting to the OPTOPlay

INSTALLATION

One of many benefits of a USB device is the ease of installation. Simply plug OPTOPlay into a USB port, and the device is installed.

MINIMUM SYSTEM REQUIREMENTS

- Intel Celeron 366 MHz CPU or equivalent AMD CPU
- Windows 98SE, ME, 2000, XP operating system
- One available USB port
- 64MB of RAM

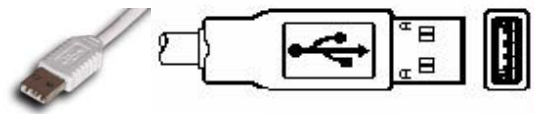
HARDWARE INSTALLATION

Before you begin the installation, make sure you have read the section in your computer's manual for installing USB devices. Your computer's manual should describe the precautions you should take during installation. Typically, there is no need to shut down the computer to install a USB device, however, we will begin the installation with the computer turned off.

1. Turn off the computer.
2. Find the USB port on your computer. A standard USB port is shown below. It is typically located next to the PS/2 and serial ports on the back of a desktop computer system, or on the side of a notebook computer.



3. Plug OPTOPlay's USB cable (Series A plug type) into the USB port of your computer.



4. Turn on the computer. OPTOPlay gets power from the computer via the USB connection, eliminating the need for an external power supply.

SOFTWARE INSTALLATION

After connecting the OPTOPlay, your computer will automatically detect the AUDIOTRAK OPTOPlay as USB Composite Device and will be proceed with the installation. The steps below are for a Windows 98 installation. Installations in other operating systems will proceed in a similar manner.

1. Windows will automatically detect that a new hardware has been connected and the “Add New Hardware Wizard” will appear. Click ‘Next’.



2. Choose “Search for the best drivers...”



3. Choose “specify a location” and specify the location of the Windows 98 CD or files. If you are connected to the Internet, you may also choose “Microsoft Windows Update”.



4. The window will display the ‘Windows driver file search for the device’ and ‘Location of driver’. Click ‘Next’.



5. When “USB composite device” appears, click “Finish”.



After the USB Composite Device is installed, the installation will continue with the installation of the USB Audio Device.

6. The USB Audio Device Window will appear. Just click “Next”. And choose “Search for the best driver...” and click “Next”.



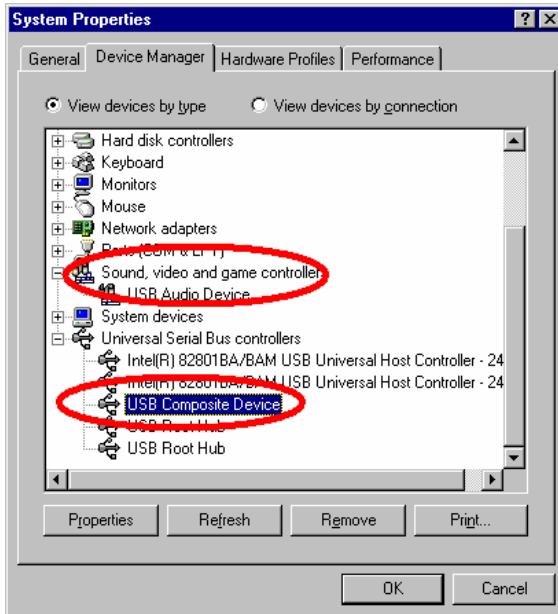
7. Click "Next".



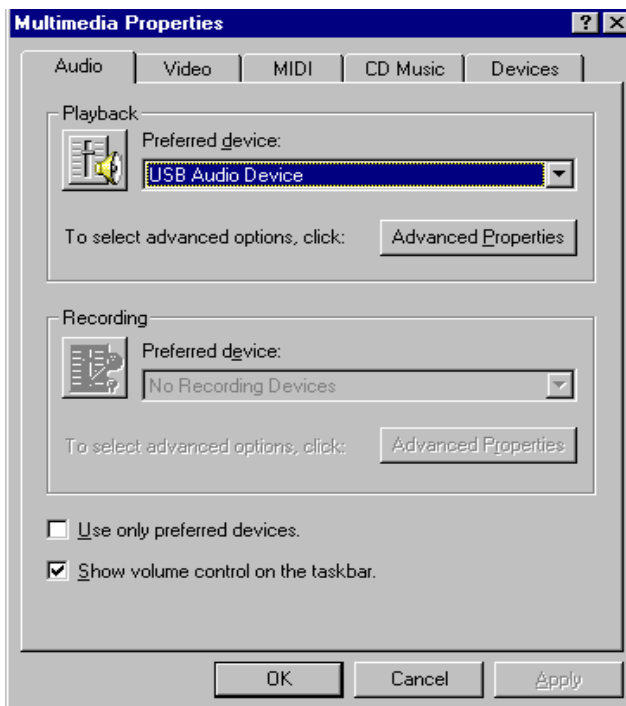
8. When "USB Audio device" appears, click "Finish".



9. To confirm the installation of the OPTOPlay, go to 'Start->Settings-> Control Panel -> System -> Device Manager'. Confirm that the "USB Audio Device" is listed under 'Sound, video and game controllers' and that the "USB Composite Device" is listed under 'Universal Serial Bus controllers'.



10. Go to 'Multimedia Properties' and choose 'USB Audio Device' under Playback.

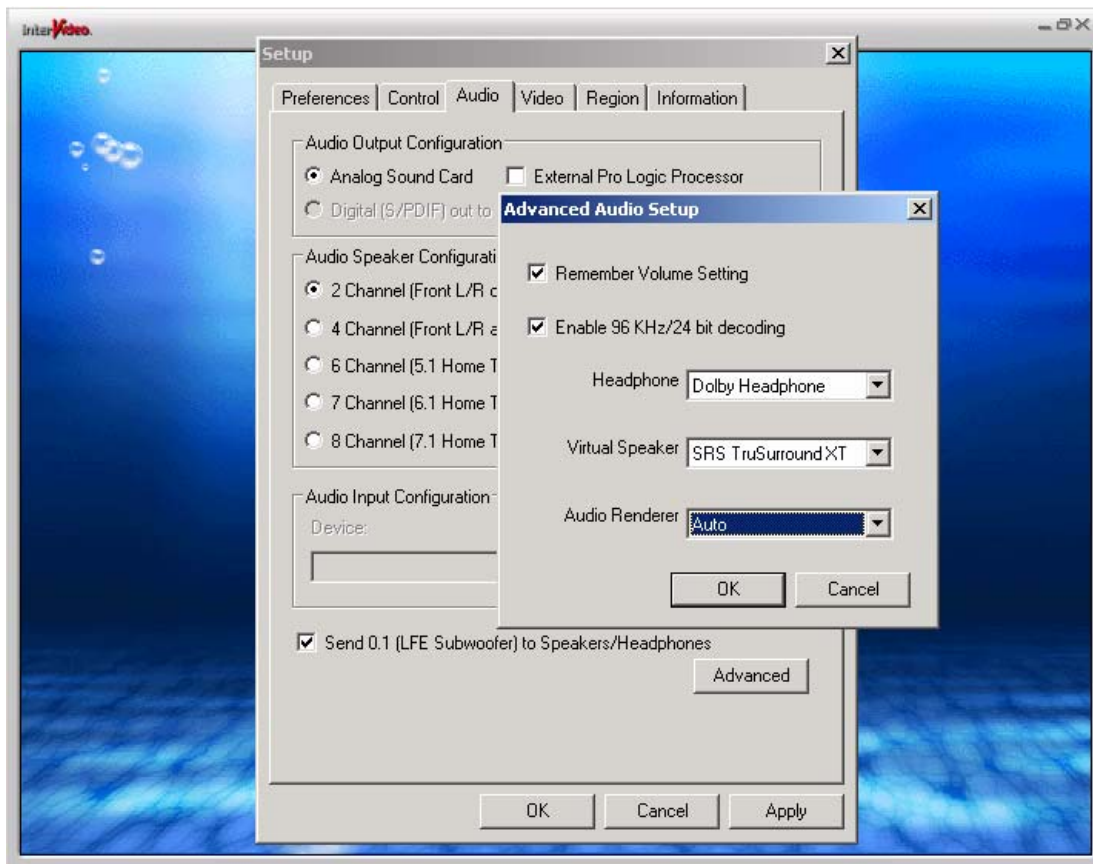


CONFIGURING WINDVD4

WinDVD 4 must be installed to enjoy all the benefits of OPTOPlay. Locate the WinDVD folder on the AUDIOTRAK Installation CD, and click on the setup.exe file to complete the installation.

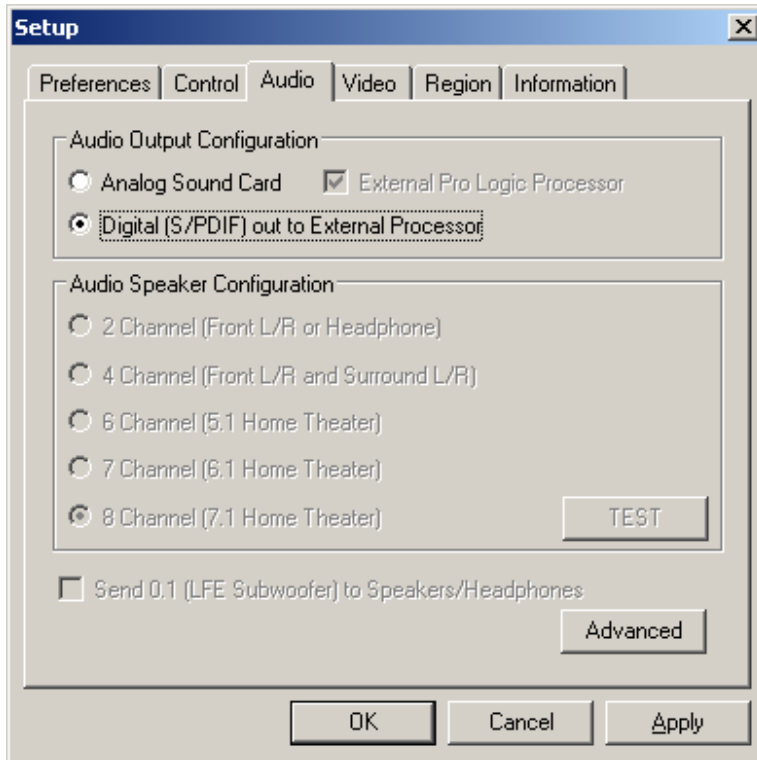
Once WinDVD 4 is installed, open the application and complete the following steps to configure WinDVD 4 for operation with OPTOPlay.

1. Right mouse click on the main window of WinDVD, and choose 'Setup.'
2. Select the 'Audio' Tab.
3. Select '2 channel' and click 'Advanced' and select the settings as shown below to enjoy Virtual Surround sound using Dolby Headphone Technology.



A 5.1 surround sound digital output also can be achieved by using OPTOPlay's Optical connector to pass thru Dolby digital 5.1 with including WinDVD4.

Select Digital (S/PDIF) on Audio tab of WinDVD for Dolby Digital Pass Thru Connection to A External Decoder



SPECIFICATIONS

- Interface: USB Spec Ver1.1, USB Audio Class Spec Ver1.0
- Output: Analog & Digital Audio 2-channel output
- Output Format: Analog Line or Headphone Output
SPDIF Optical Output (TOS-Link)
- Sample Rate: 32 kHz, 44.1 kHz, 48 kHz, 64 kHz, 88.2 kHz, 96 kHz
* Digital output on Mac OS X is 48kHz
- Bits Resolution: 16 Bits or 24 Bits
- Analog output Level: 1.0 Vrms Maximum
- Headphone Amp Power: 50mW Maximum
- Power: USB Bus powered - 100mA