

## ESI USB MIDI driver v1.0 Installation

Below installation procedure is for the ESI RoMI/O. However, Driver installation procedure is same for M4U and M8U.

### 1. Windows XP/2003

Just plug the USB device, and run Romio.exe (M4U.exe, M8U.exe).

It's the Auto installation.

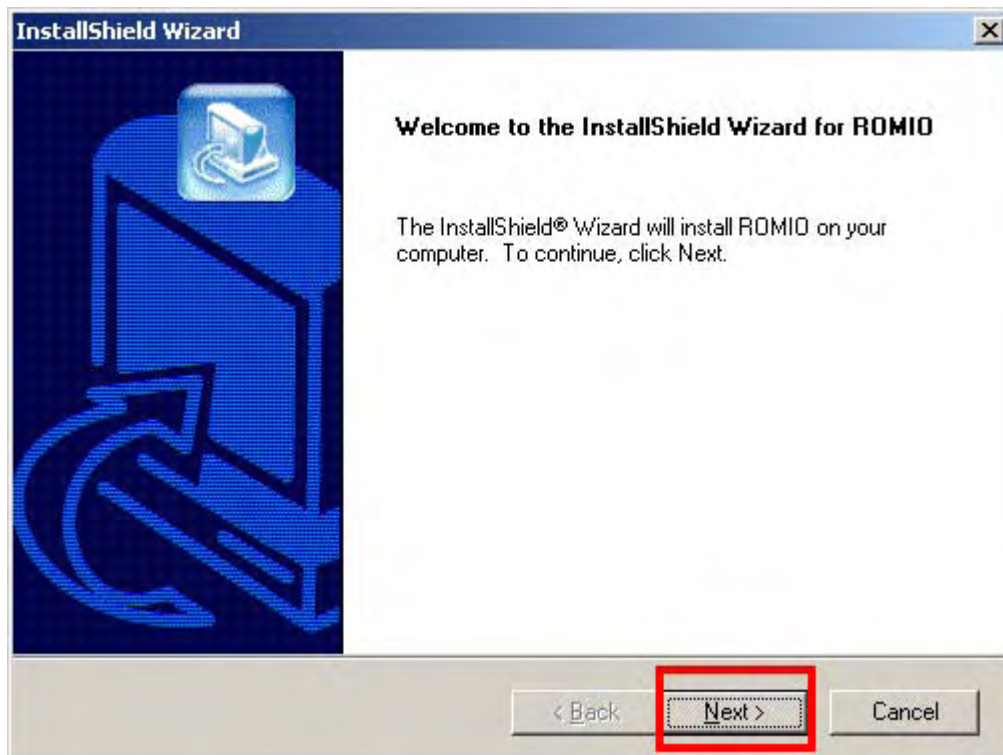
### 2. Windows 2000/ME

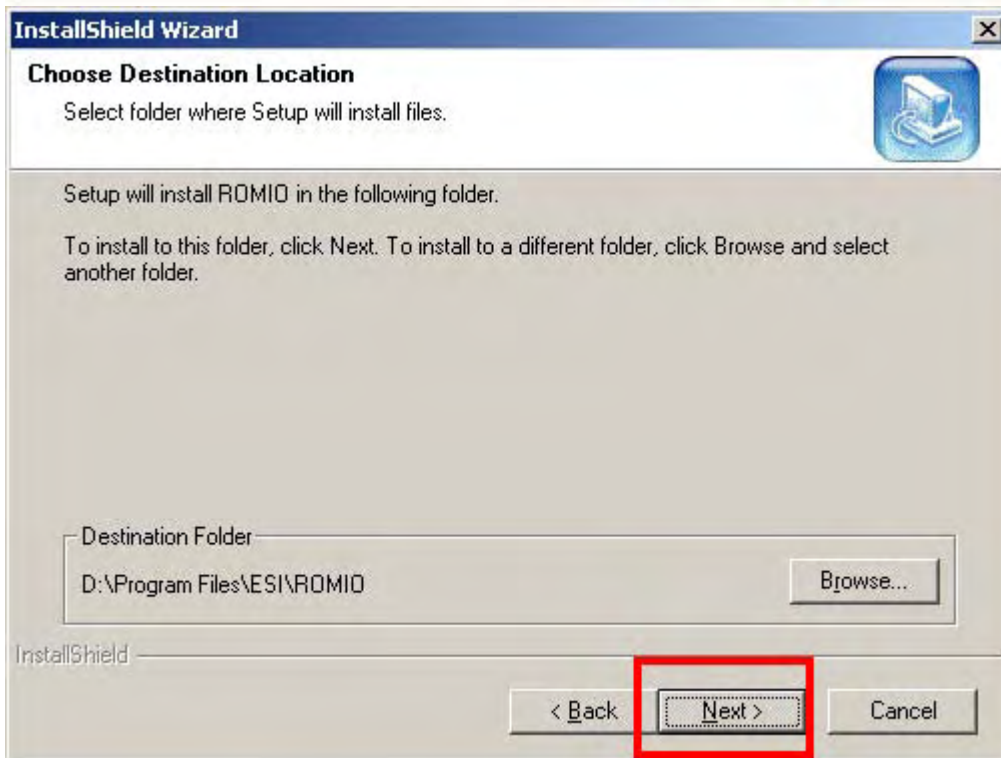
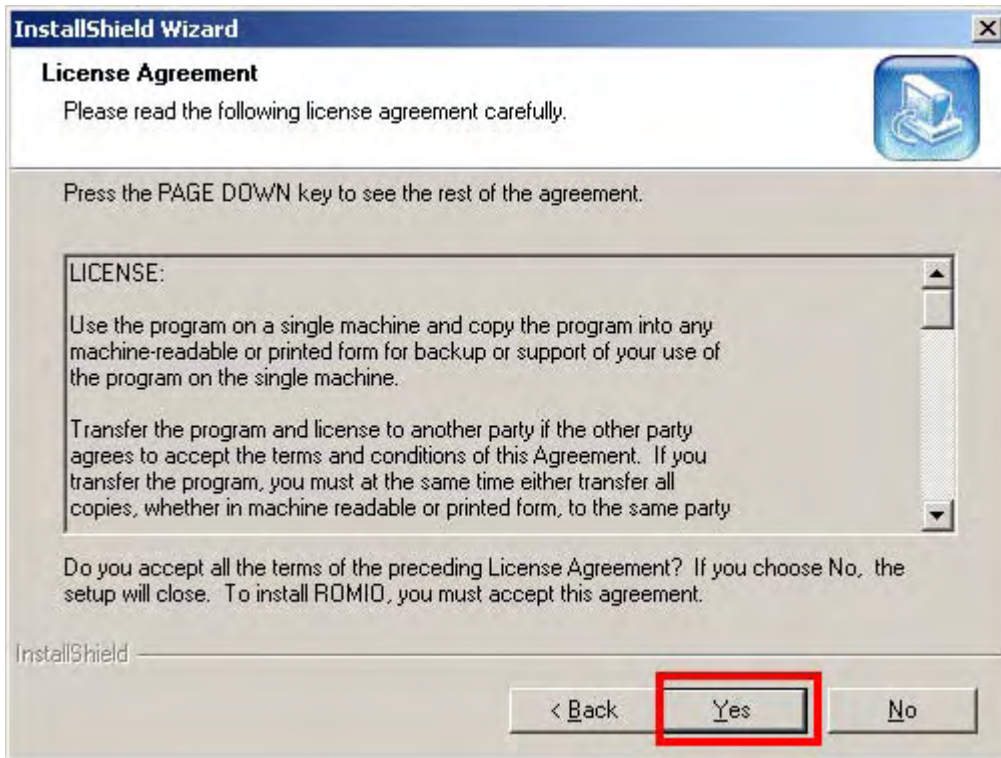
**Don't plug the USB device before install the driver.** Otherwise, your system will be automatically rebooted.

1) Unplug the USB device from your system.

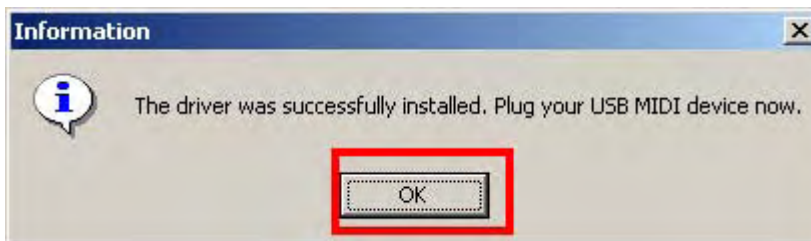
2) Run Romio.exe (M4U.exe, M8U.exe).

And click 'Yes' follow the instruction.

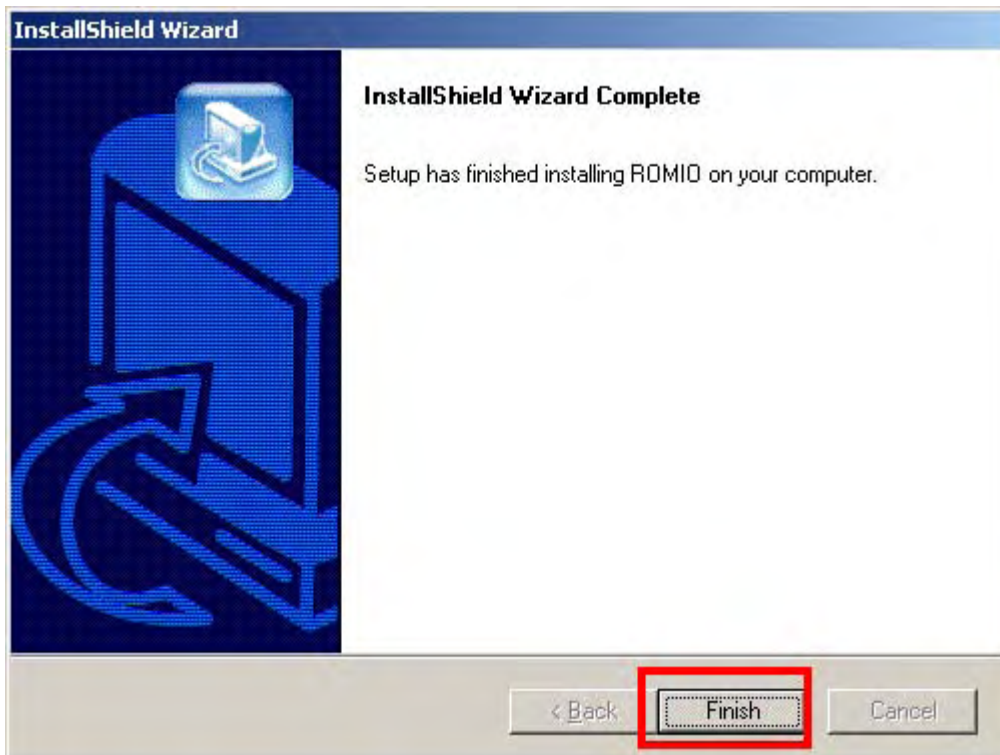




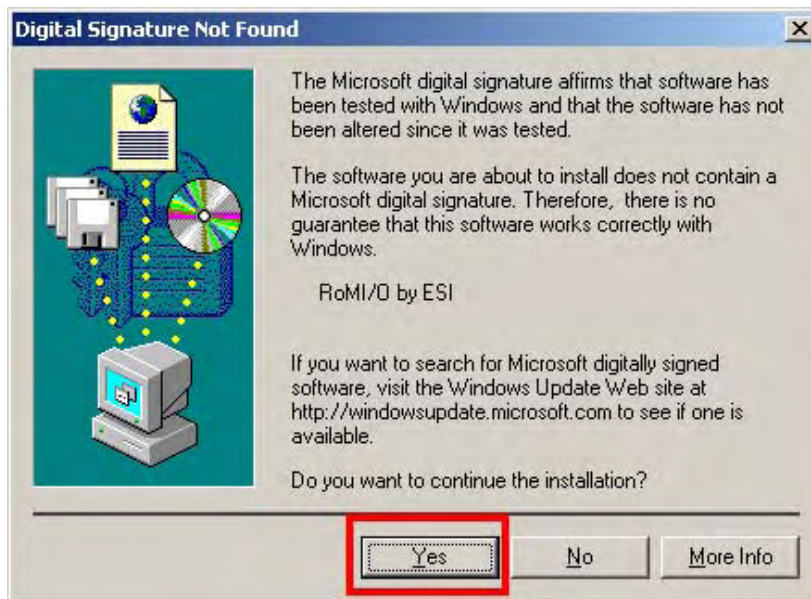
With Windows 2000 and XP installations, a message might appear stating “The software has not passed Windows Logo testing to verify its compatibility with Windows XP.” Though the message appeared, the driver is completely tested and verified by ESI and is safe to use. You can ignore the message and just click ‘Yes’.



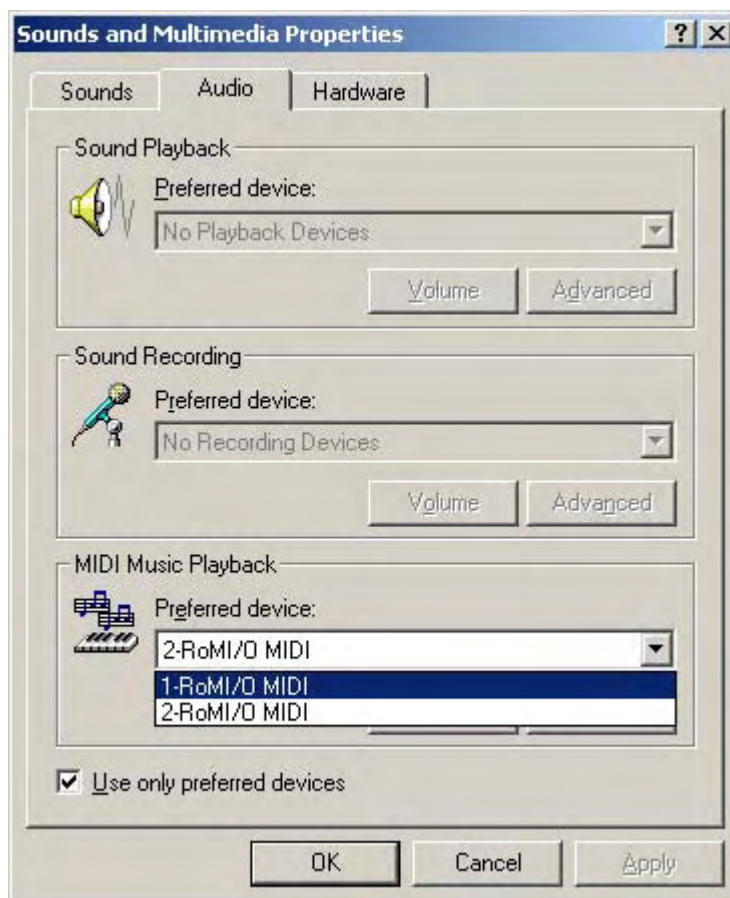
3) After finishing the driver installation, plug the USB device to your computer.



In the case of Windows 2000, You may see this message again. Simply ignore the message and just click 'Yes'.



4) Go to 'My computer-> Console -> Sounds and multimedia Properties -> MIDI tab. Select RoMI/O (M4U, M8U) as your playback device.



\* In some case of Windows 2000, after rebooting your computer, you may find this message again. Just ignore and click 'Yes'.

