

# Knowledge Base

## Installation of MAYA44 XTe under Windows Vista & 7/8/10 (from v1.07)

original release: 2014-09-26 | ID: KB00205EN



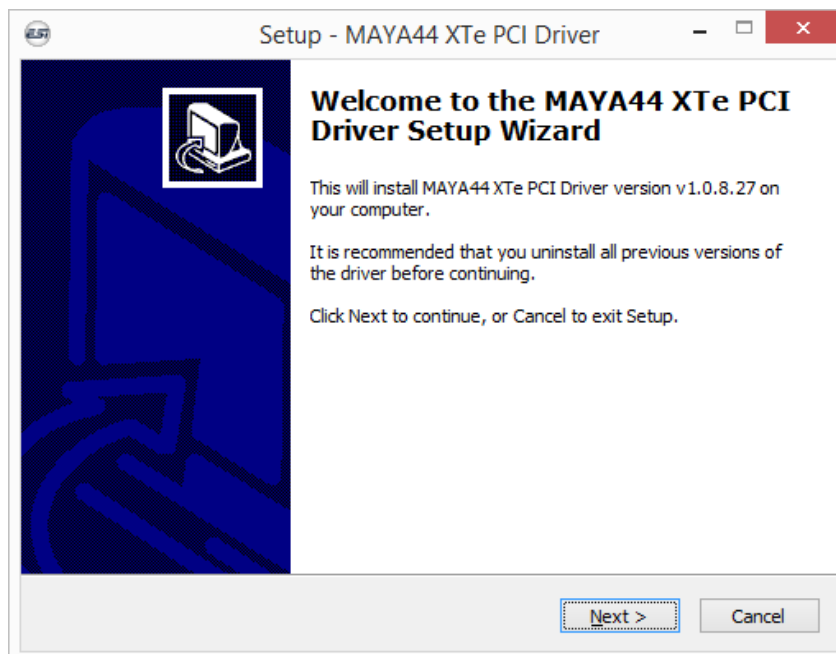
### Introduction

This text describes how to install the MAYA44 XTe driver under Windows 8.1 (32- or 64-bit) with driver versions starting from version 1.07. The process is virtually the same for Windows Vista, Windows 7, Windows 8 and Windows 10. A description of the installation with earlier drivers (up to version 1.06) can be found here as a video .

### Installation

Make sure that you have downloaded and unzipped the driver file . Install the MAYA44 XTe hardware in your computer if not already done. If you are just booting your system, Windows might detect the hardware as a new device and a *Found New Hardware* dialog will appear automatically. If so, click *Cancel*.

To start the installation, launch the setup program, which is an .exe file that is inside the driver download, by double clicking on it. Typically the filename is something like *MAYA44\_XTe\_driver\_vX.YY\_setup.exe* where X.YY is the version number of the driver. When launching the installer, Windows might display a security message. Make sure to allow the installation. After that, the following dialog will appear:

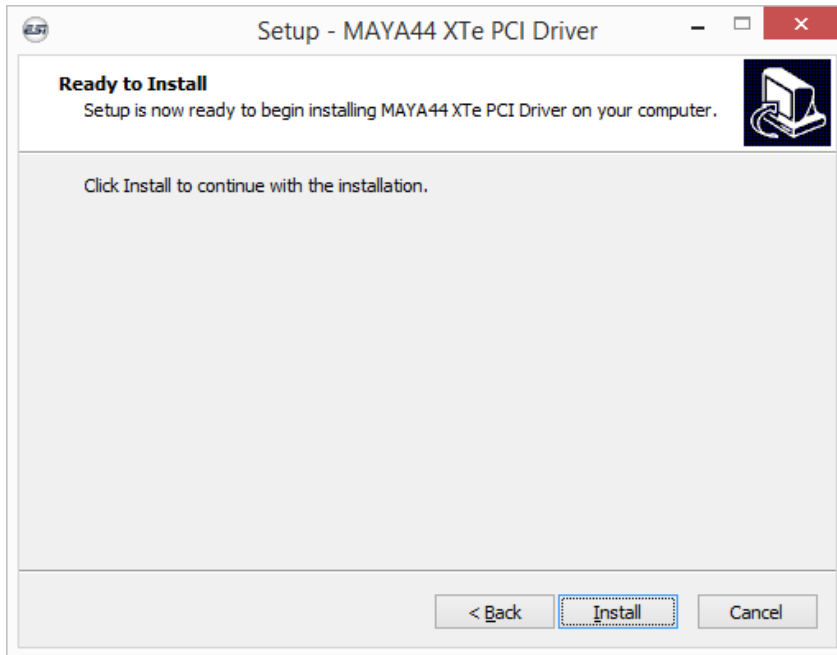


Click *Next* and then the following dialog will appear:

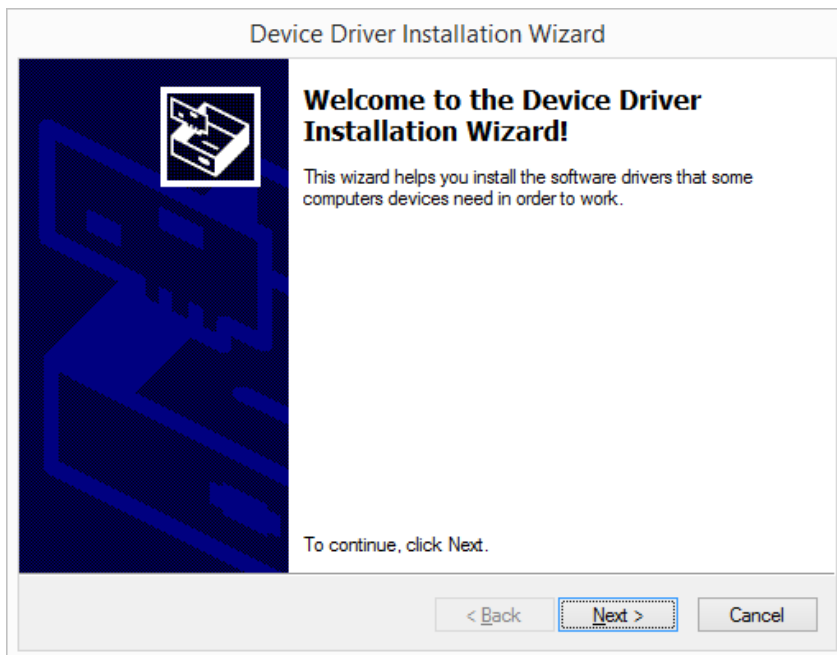
## Knowledge Base

### Installation of MAYA44 XTe under Windows Vista & 7/8/10 (from v1.07)

original release: 2014-09-26 | ID: KB00205EN



Now click *Install*. Files are now being copied. After some time an additional dialog will appear:

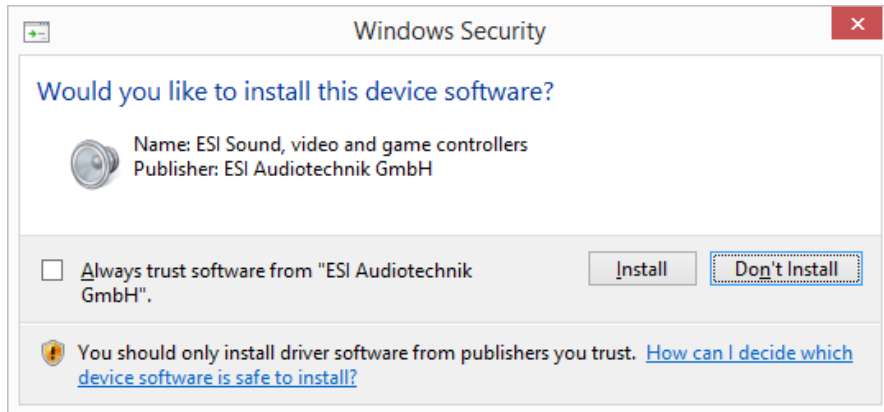


Confirm this by clicking *Next*. Again some files are being copied and typically you will be prompted with a *Windows Security* message like this:

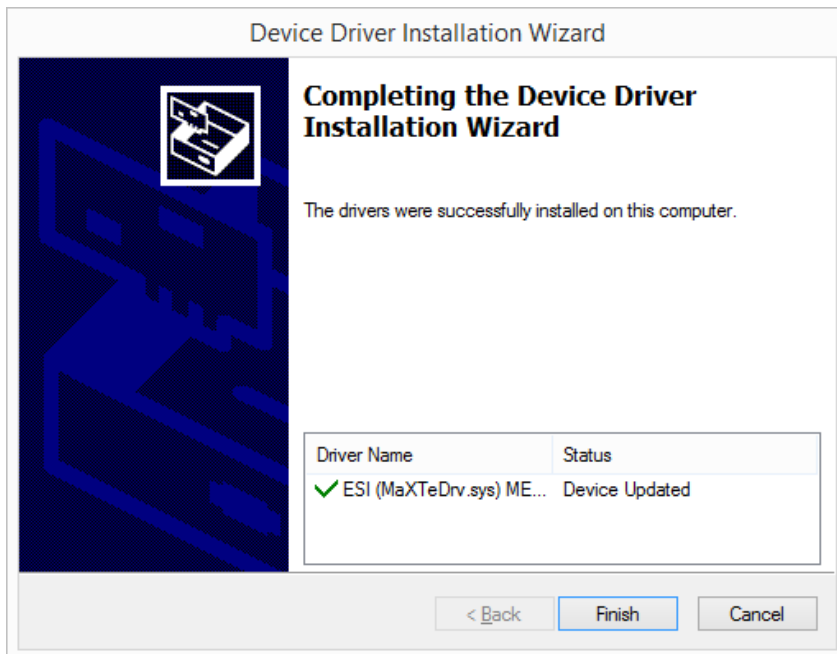
## Knowledge Base

### Installation of MAYA44 XTe under Windows Vista & 7/8/10 (from v1.07)

original release: 2014-09-26 | ID: KB00205EN



Confirm it by clicking *Install*. After a while the installation then will be completed and the following dialog will appear:



Once you see this, click *Finish*. On some systems it might be good to reboot the computer manually now. You will see that the MAYA44 XTe control panel is now automatically being loaded and displayed - the installation is finished.

## Uninstallation

In case you need to uninstall the driver at a later time, you will find it under the list of installed *Programs* in Windows *Control Panel*. You can simply remove it there.