

Knowledge Base

Installation of ESP1010 under Windows Vista & 7/8/10 (from v1.17)

original release: 2014-09-27 | ID: KB00210EN



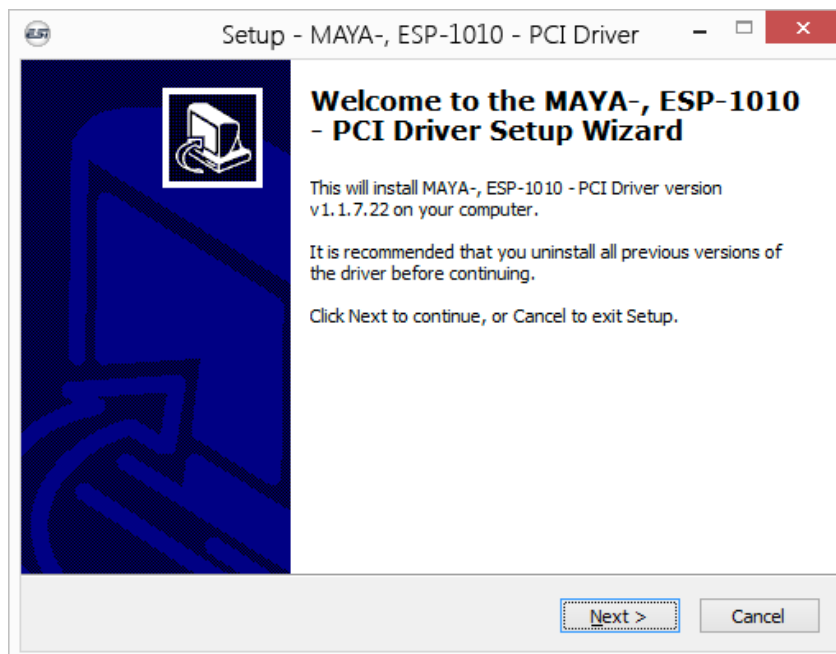
Introduction

This text describes how to install the ESP1010 driver under Windows 8.1 (32- or 64-bit) with driver versions starting from version 1.17. The process is virtually the same for Windows Vista, Windows 7, Windows 8, Windows 10. A description of the installation with earlier drivers (up to version 1.15) can be found here.

Installation

Make sure that you have downloaded and unzipped the driver file. Install the ESP1010 hardware in your computer if not already done. If you are just booting your system, Windows might detect the hardware as a new device and a *Found New Hardware* dialog will appear automatically. If so, click *Cancel*.

To start the installation, launch the setup program, which is an .exe file that is inside the driver download, by double clicking on it. Typically the filename is something like *ESP1010_driver_vX.YY_setup.exe* where *X.YY* is the version number of the driver. When launching the installer, Windows might display a security message. Make sure to allow the installation. After that, the following dialog will appear:

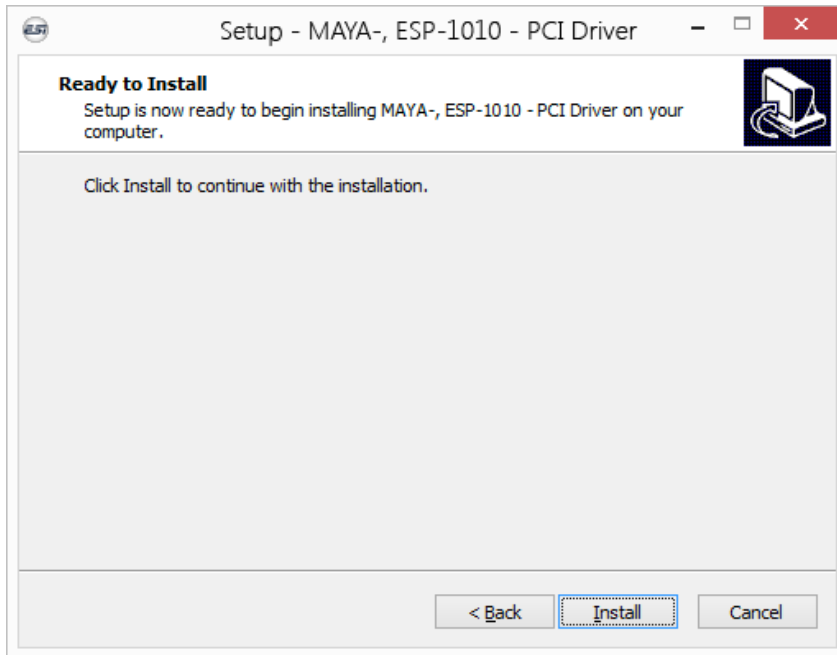


Click *Next* and then the following dialog will appear:

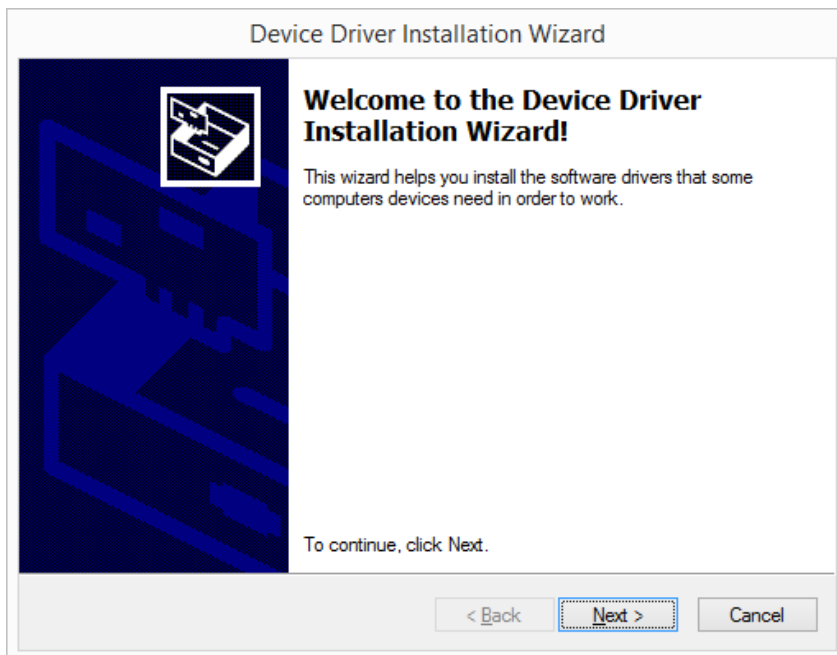
Knowledge Base

Installation of ESP1010 under Windows Vista & 7/8/10 (from v1.17)

original release: 2014-09-27 | ID: KB00210EN



Now click *Install*. Files are now being copied. After some time an additional dialog will appear:



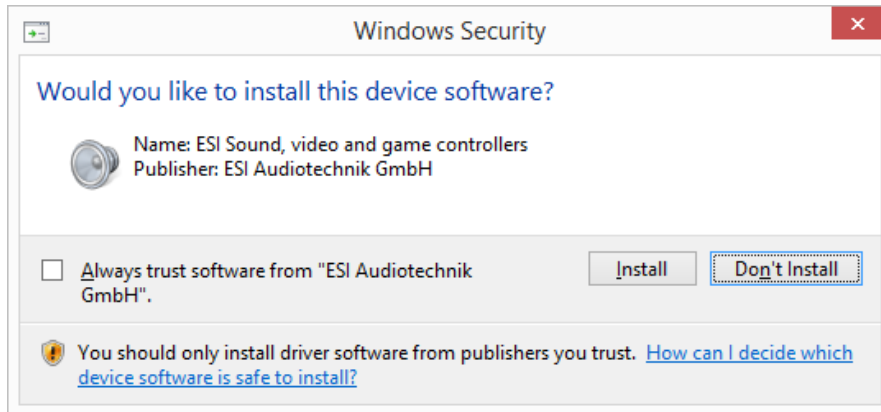
Confirm this by clicking *Next*. Again some files are being copied and typically you will be prompted with a *Windows Security* message like this:



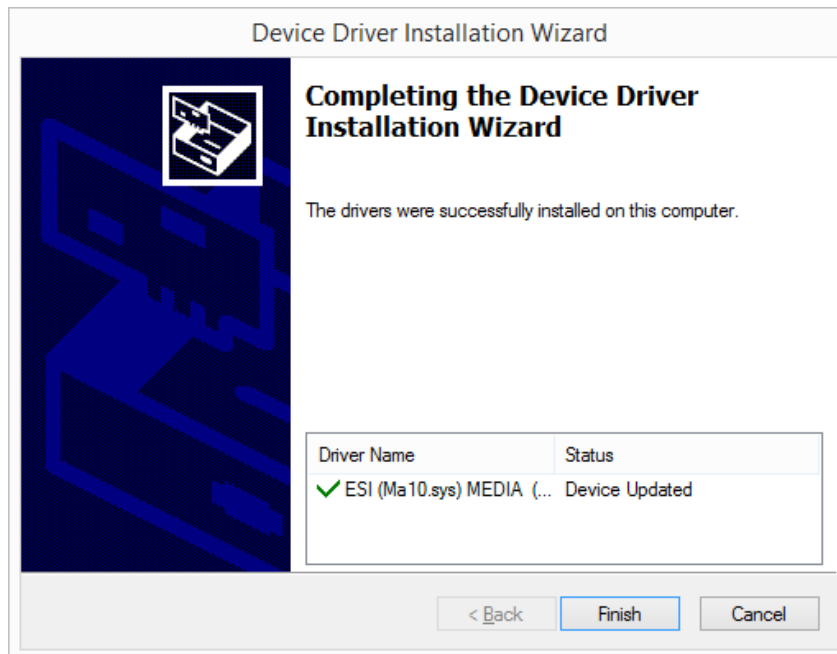
Knowledge Base

Installation of ESP1010 under Windows Vista & 7/8/10 (from v1.17)

original release: 2014-09-27 | ID: KB00210EN



Confirm it by clicking *Install*. After a while the installation then will be completed and the following dialog will appear:



Once you see this, click *Finish*. On some systems it might be good to reboot the computer manually now. You will see that the ESP1010 control panel is now automatically being loaded and displayed - the installation is finished.

Uninstallation

In case you need to uninstall the driver at a later time, you will find it under the list of installed *Programs* in Windows *Control Panel*. You can simply remove it there.