

Knowledge Base

Installation of Prodigy 7.1 HiFi under Windows Vista & 7/8 (from v1.18)

original release: 2014-09-27 | ID: KB00215EN



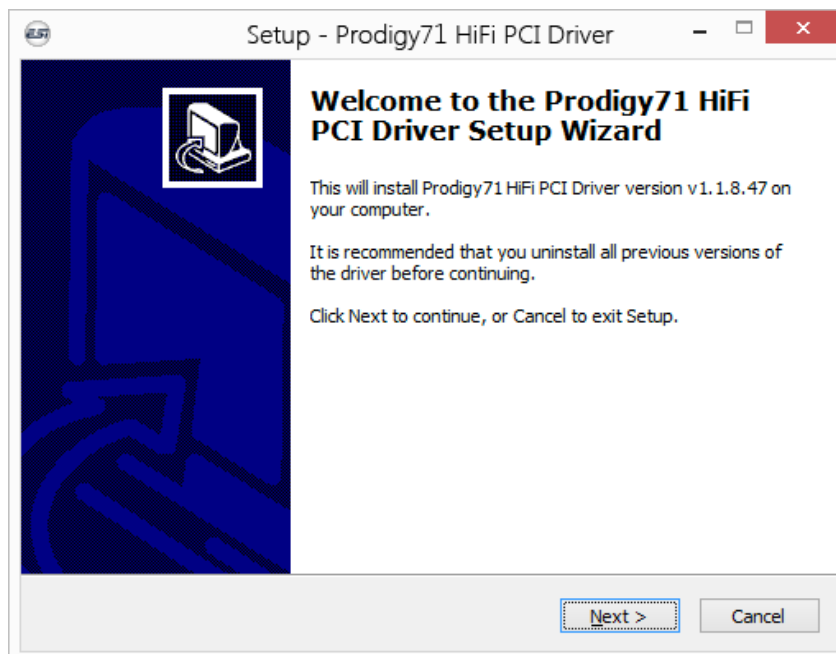
Introduction

This text describes how to install the Prodigy 7.1 HiFi driver under Windows 8.1 (32- or 64-bit) with driver versions starting from version 1.18. The process is virtually the same for Windows Vista, Windows 7 and Windows 8. A description of the installation with earlier drivers (up to version 1.16) can be found here as a video .

Installation

Make sure that you have downloaded and unzipped the driver file . Install the Prodigy 7.1 HiFi hardware in your computer if not already done. If you are just booting your system, Windows might detect the hardware as a new device and a *Found New Hardware* dialog will appear automatically. If so, click *Cancel*.

To start the installation, launch the setup program, which is an .exe file that is inside the driver download, by double clicking on it. Typically the filename is something like *Prodigy_71_HiFi_driver_vX.YY_setup.exe* where *X.YY* is the version number of the driver. When launching the installer, Windows might display a security message. Make sure to allow the installation. After that, the following dialog will appear:

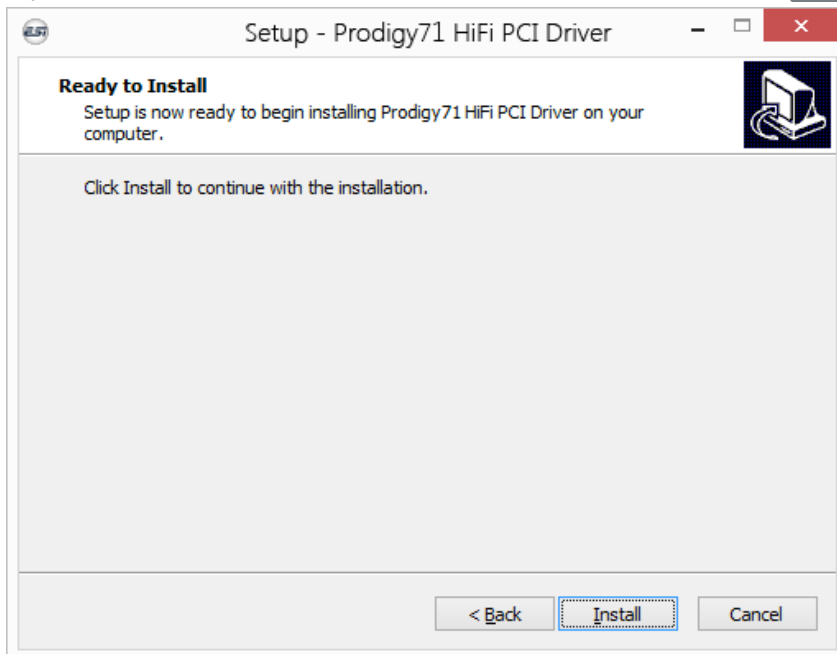


Click *Next* and then the following dialog will appear:

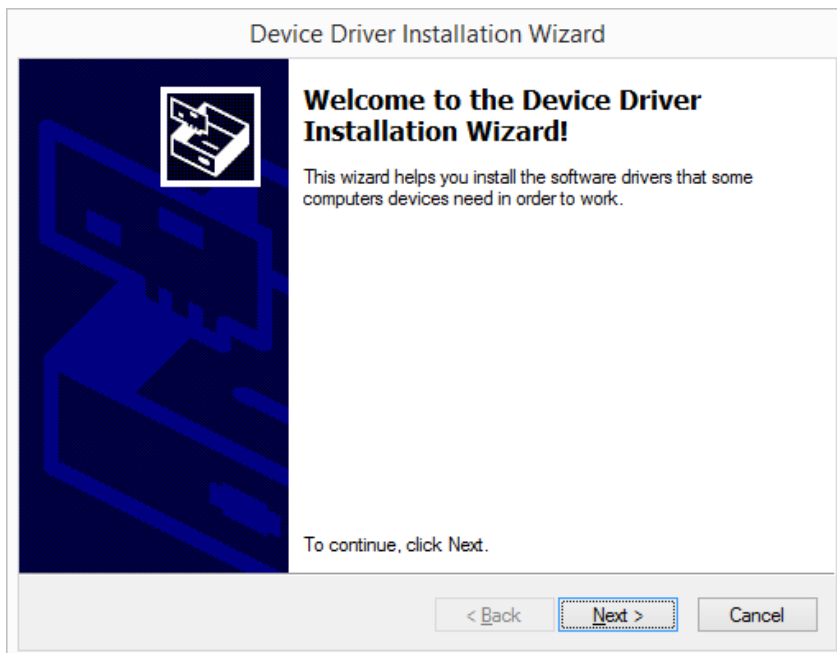
Knowledge Base

Installation of Prodigy 7.1 HiFi under Windows Vista & 7/8 (from v1.18)

original release: 2014-09-27 | ID: KB00215EN



Now click *Install*. Files are now being copied. After some time an additional dialog will appear:

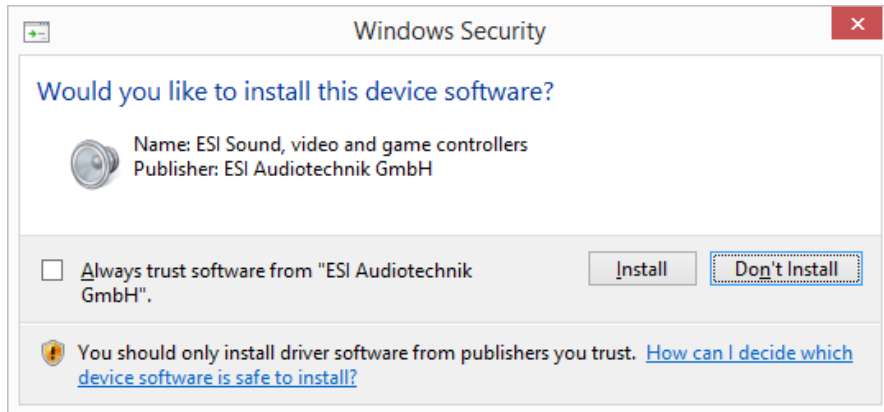


Confirm this by clicking *Next*. Again some files are being copied and typically you will be prompted with a *Windows Security* message like this:

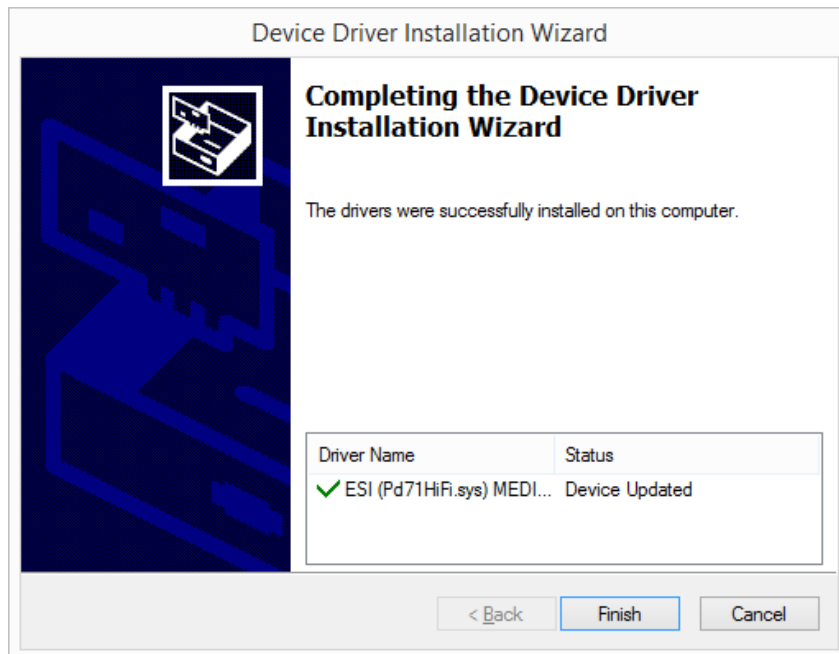
Knowledge Base

Installation of Prodigy 7.1 HiFi under Windows Vista & 7/8 (from v1.18)

original release: 2014-09-27 | ID: KB00215EN



Confirm it by clicking *Install*. After a while the installation then will be completed and the following dialog will appear:



Once you see this, click *Finish*. On some systems it might be good to reboot the computer manually now. You will see that the Prodigy 7.1 HiFi control panel is now automatically being loaded and displayed - the installation is finished.

Uninstallation

In case you need to uninstall the driver at a later time, you will find it under the list of installed *Programs* in Windows *Control Panel*. You can simply remove it there.