



## Introduction

This text describes how to install the UGM192 driver under Windows 10 (32- or 64-bit). The process is virtually the same for Windows 7, Windows 8 and Windows 8.1.

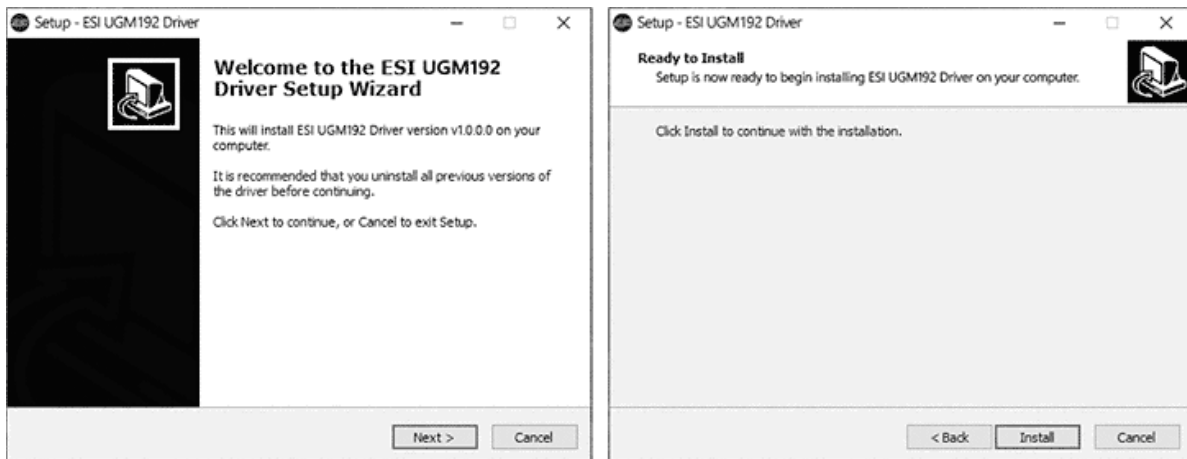
## Preparation

If UGM192 is connected to your computer with the USB cable, disconnect it now. You will need to connect it again later during the installation.

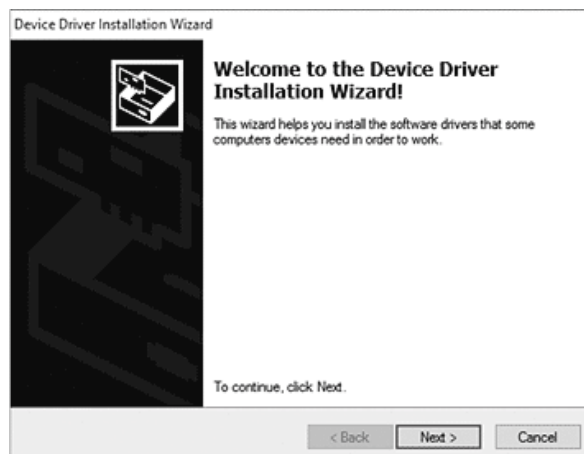
Make sure that you have downloaded and unzipped the driver file with the driver you are about to install.

## Installation

To start the installation, launch the setup program, which is an .exe file that is inside the driver download, by double clicking on it. Typically the filename is something like *U108\_PRE\_vX.YY\_setup.exe* where X.YY is the version number of the driver. When launching the installer, Windows might display a security message. Make sure to allow the installation. After that, the following dialog on the left will appear. Click on *Next* and the dialog on the right will be shown:



Now click *Install*. Files are now being copied. After some time an additional dialog will appear:

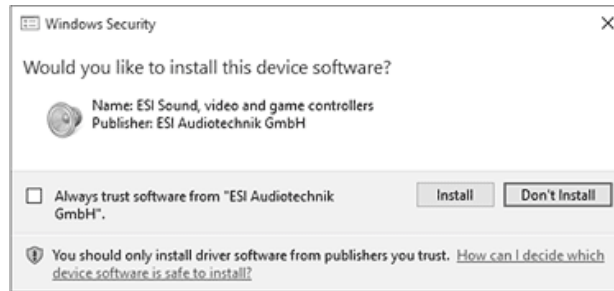


Confirm this by clicking *Next*. Again some files are being copied and typically you will be prompted with a *Windows Security* message like this:

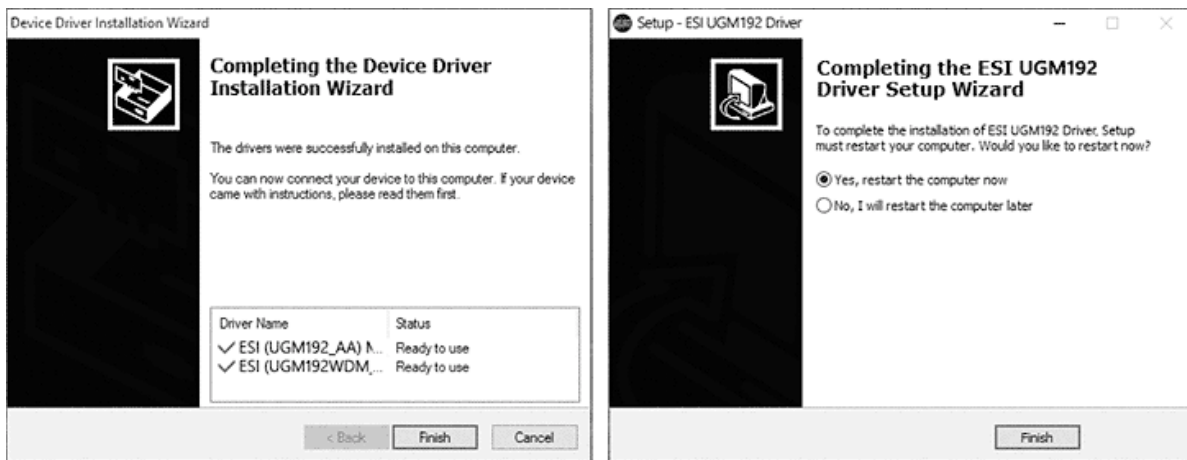
# Knowledge Base

## Installation of UGM192 under Windows

original release: 2020-02-10 | ID: KB00280EN



Confirm it by clicking *Install*. After a while the installation then will be completed and the following dialog on the left will appear. Once you see this, click *Finish*.



We strongly suggest to select *Yes, restart the computer now* and then click *Finish* on the dialog above right.

Once rebooted, you can connect UGM192 to your computer anytime if not done yet. Windows will automatically setup the system so you can use the device. Once the system starts again and you are logged in with the hardware connected, you will see by looking at the ESI icon in the taskbar notification, that the UGM192 control panel is now automatically being loaded:



If you can see it, the driver installation has been completed successfully.

### Uninstallation

In case you need to uninstall the driver at a later time, you will find it under *Settings > System > Apps & features* (under Windows 10) or in the list of installed *Programs* in *Windows Control Panel* (with previous Windows versions). You can simply remove it there.