



## ESP1010: Readme

unified driver and control panel for Windows Vista, Windows 7, Windows 8.1, Windows 10  
version: 1.20 | date: 2015-09-22 | filename: ESP1010-x2v-v1\_20.zip | product: ESP1010

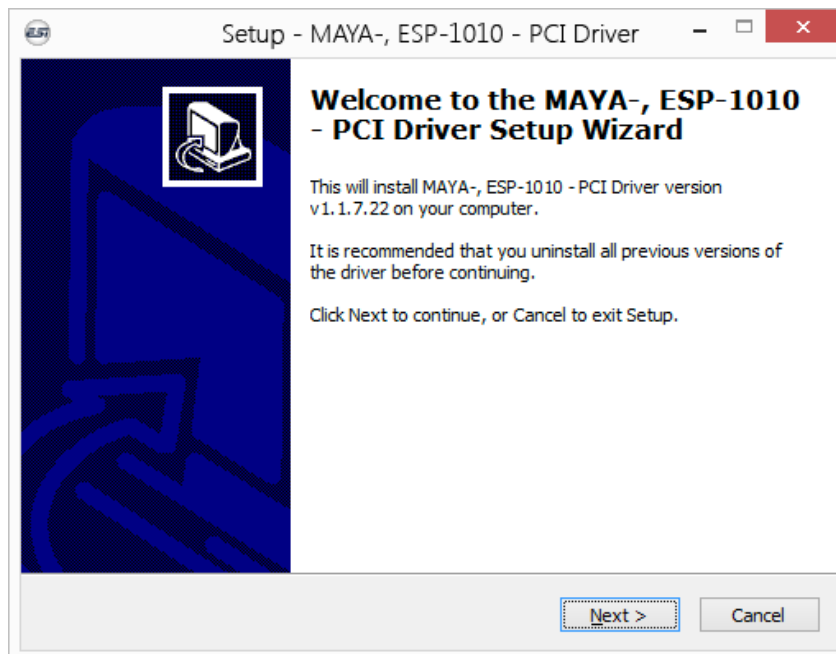
### ESP1010 under Windows 10 / 8.1 / 8 / 7 / Vista

Please note that this driver is only intended for 32-bit and 64-bit versions of Windows Vista, Windows 7, Windows 8, Windows 8.1 and Windows 10. The instructions below focus on Windows 8.1, however the process is identical on all other Windows versions.

### Installation

Make sure that you have downloaded and unzipped the driver file. Install the ESP1010 hardware in your computer if not already done. If you are just booting your system, Windows might detect the hardware as a new device and a *Found New Hardware* dialog will appear automatically. If so, click *Cancel*.

To start the installation, launch the setup program, which is an .exe file that is inside the driver download, by double clicking on it. Typically the filename is something like *ESP1010\_driver\_vX.YY\_setup.exe* where *X.YY* is the version number of the driver. When launching the installer, Windows might display a security message. Make sure to allow the installation. After that, the following dialog will appear:

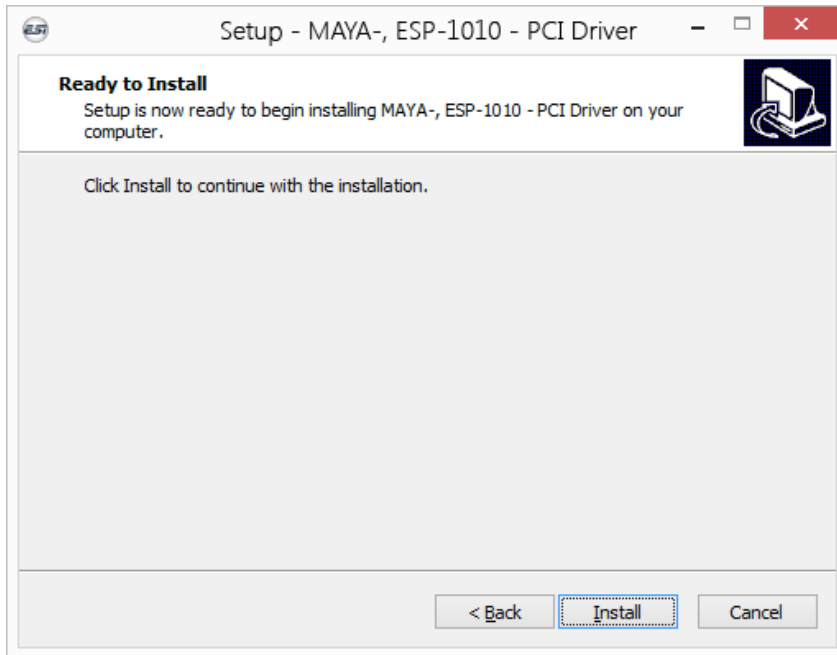


Click *Next* and then the following dialog will appear:

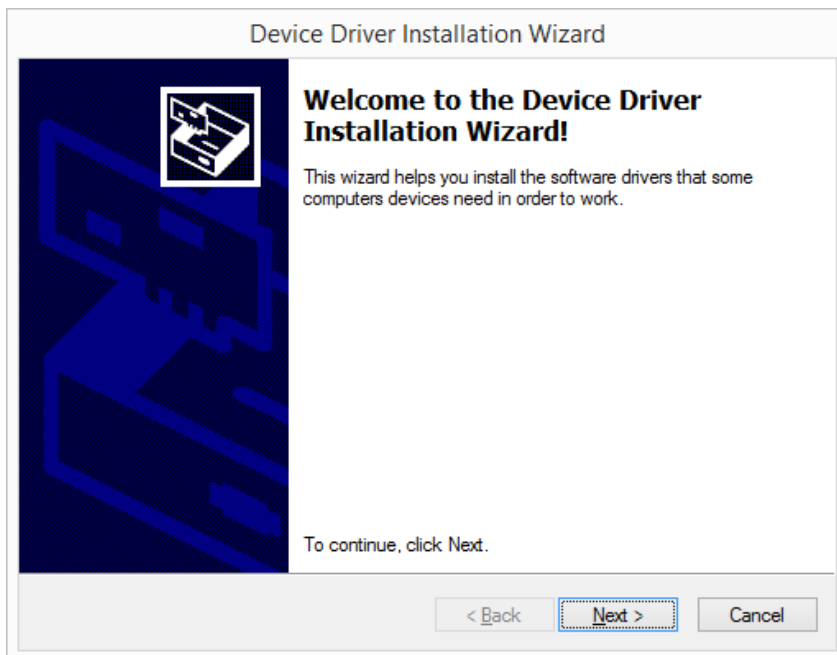


## ESP1010: Readme

unified driver and control panel for Windows Vista, Windows 7, Windows 8.1, Windows 10  
version: 1.20 | date: 2015-09-22 | filename: ESP1010-x2v-v1\_20.zip | product: ESP1010



Now click *Install*. Files are now being copied. After some time an additional dialog will appear:

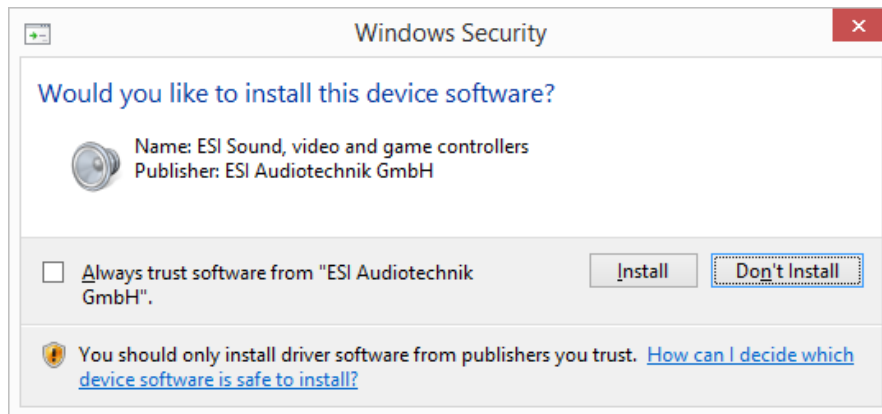


Confirm this by clicking *Next*. Again some files are being copied and typically you will be prompted with a *Windows Security* message like this:

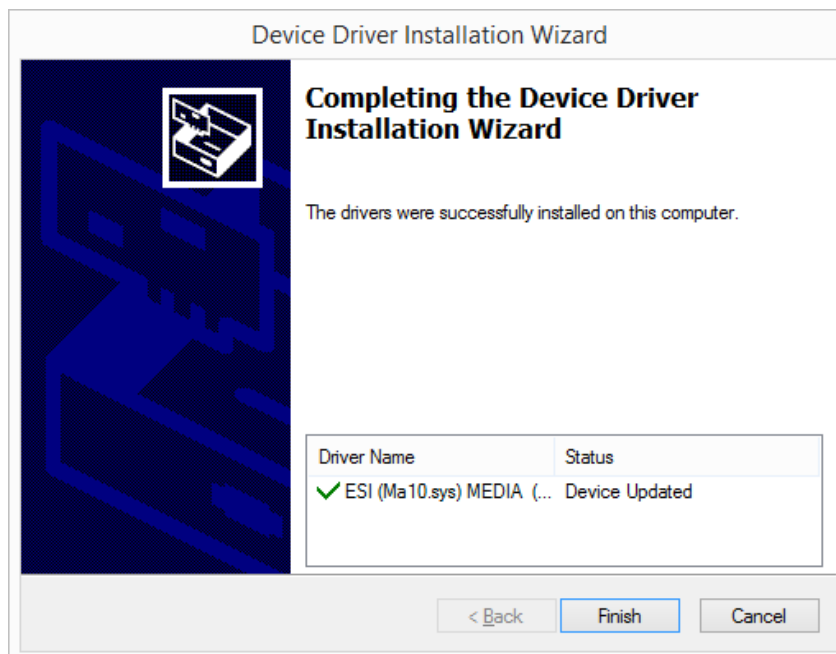


## ESP1010: Readme

unified driver and control panel for Windows Vista, Windows 7, Windows 8.1, Windows 10  
version: 1.20 | date: 2015-09-22 | filename: ESP1010-x2v-v1\_20.zip | product: ESP1010



Confirm it by clicking *Install*. After a while the installation then will be completed and the following dialog will appear:



Once you see this, click *Finish*. On some systems it might be good to reboot the computer manually now. You will see that the ESP1010 control panel is now automatically being loaded and displayed - the installation is finished.

## Uninstallation

In case you need to uninstall the driver at a later time, you will find it under the list of installed *Programs* in Windows *Control Panel*. You can simply remove it there.